



## Reports for IM&T Directed Enhanced Services and RECORDS9

There are some data items that cannot be picked up with either MIQUEST queries, or from clinical audits for the IM&T DES and reporting of RECORDS9 for QMAS.

We have supplied Additional Reports that will help you find this data.

For IM&T DES you can submit it to CHART as part of the data accreditation. CHART will automatically pick up the data if it is stored in c:\CHART\system reports which is the default path on Configuration Options.

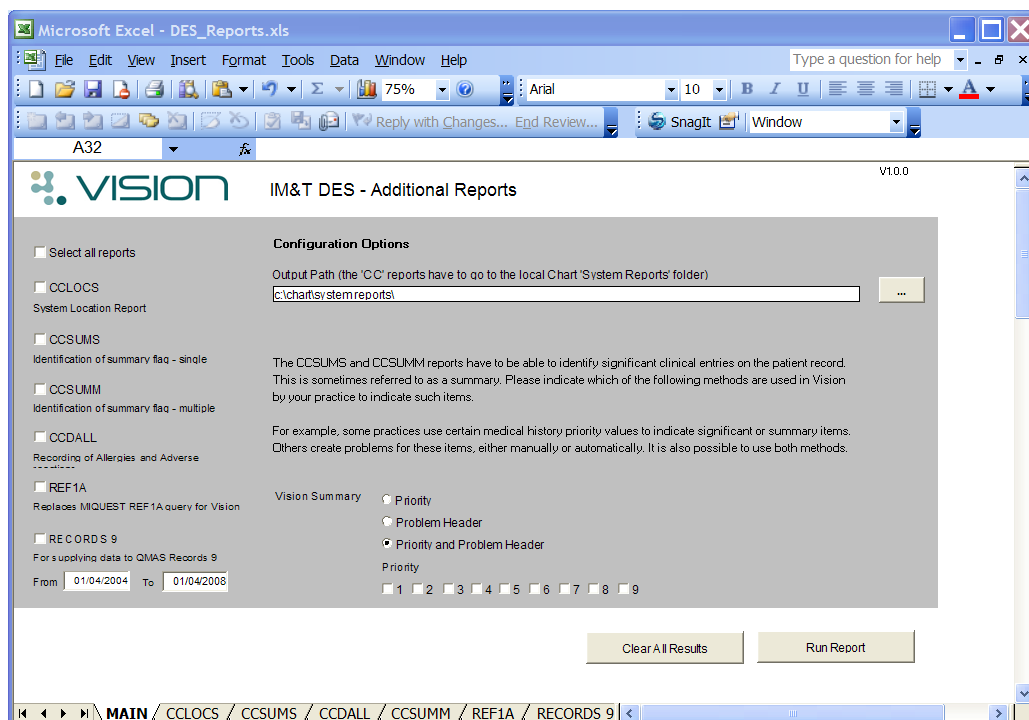
For RECORDS9 for QMAS you will have to manually enter your percentage figures onto the QMAS website.

### Where DES\_Reports.xls is stored

The DES\_Reports Excel file may already be on your system in **O:\Download\audit**. If you cannot see the file in this location you can download it from here <http://www.inps4.co.uk/clinical-audits/downloads/> Select QOF – Records 9:

1. If you are a LAN practice, this can be on any workstation (if mapped to the O: and P: drives).
- If on a managed server, then in O:\Download\audit on the terminal server.

### What the report looks like





## Summary - select the options for reports and run them

1. Open **DES\_Reports.xls** by double clicking on it.
2. Change the **Tools - Macro - Security to Medium** and click OK.
3. Select the options you want.
4. Select which Additional Reports are to be run by ticking the check box by the report.

Then click **Run Report**. If you are not already logged into Vision when you Run Report, a login screen will be displayed for you to do so.

When finished, you should see a message *Reports completed successful*.

## Running the spreadsheet for RECORDS9

Selected to run Reports 9, make sure you have chosen the required date range.

The spreadsheet will default to 2004 unless you change it.

If you are not already logged into Vision when you Run Report, a login screen will be displayed for you to do so.

When finished, you should see a message *Reports completed successfully*.

View the worksheet within Excel.

Choose the *RECORDS9* tab within the spreadsheet

## You will see at the top the total number of repeats and the percentage that are problem members

RECORDS 9					
Count of all repeats	36				
Repeats that are problem members	15	41.66666667%			
ALEXANDER	HOAI	01/06/1974	4215667720	SALBUTAMOL cfc free inh 100micrograms/inhalation	07/05/2010
ANDREW	REECE	07/10/1937	5625885001	SERETIDE 125 EVOHALER 25micrograms + 125micrograms/actuati	07/05/2010
ANDREW	REECE	07/10/1937	5625885001	Ascensia Autodisc biosensor discs [BAYER]	07/05/2010
ANDREW	REECE	07/10/1937	5625885001	HUMALOG MIX 25 CARTRIDGE inj susp 100 units/ml	07/05/2010
ANTHONY	MICHELE	21/07/1920	4933166501	SALMETEROL inh 25micrograms/actuation	07/05/2010
ASHLI-PETER	EDWARD	08/09/1961	6095825199	SERETIDE 50 EVOHALER cfc free inh 25mcg+50mcg/act	07/05/2010
ASHLI-PETER	EDWARD	08/09/1961	6095825199	SALBUTAMOL cfc free inh 100micrograms/inhalation	07/05/2010
FAGAN	PEARL	22/05/1952	5543121334	WARFARIN SODIUM tabs 1mg	02/09/2010
FAGAN	PEARL	22/05/1952	5543121334	ASPIRIN mr cap 162.5mg	08/10/2010
ROBIN	ASHLI-PETER	08/12/1924	4865028447	FYBOGEL PLAIN sf eff grans	17/11/2010
COOK	JEAN	28/08/1923	6134128597	ASPIRIN disp tab 75mg	06/01/2011
COOK	JEAN	28/08/1923	6134128597	WARFARIN SODIUM tabs 1mg	06/01/2011
SMITH	ALICE	10/04/1991	5387501694	PARACETAMOL tabs 500mg	01/02/2011
COOK	JEAN	28/08/1923	6134128597	METHOTREXATE inj 5mg/2ml	02/02/2011
COOK	JEAN	28/08/1923	6134128597	SUMATRIPTAN aqueous nasal spray 10mg/actuation	07/02/2011

## To find those that are not problem members

You will need to search for the entry that says "Repeats that are non problem members" and you will then see the listing of patients who have repeat masters that are not linked to a problem.

Unfortunately this will include Repeats that have been received via GP2GP that have not been inactivated following review and update.



## **Configuration Options for DES Reports**

The Configuration Options are found in the central part of the Additional Reports.

### **Output path**

The default output for these reports is to **C:\chart\system reports**. This path will be specified if you have installed the CHART software as described by PRIMIS+. If you have not yet downloaded the CHART software, then create this pathway with new folders on the local drive **chart\system reports**.

The **Browse** button ... will allow you to change this path but remember to change it back for when CHART need the data.

CHART will pick up the data from this location automatically except in the following circumstances:

- **Practices on a managed server** unless they have mapped local drives where they can see C:\ will need to copy the report output to C:\CHART\System reports.

### **Options for CCSUMS and CCSUMM reports**

When picking up significant clinical entries, the report can use (history) priorities, or problems, or both priorities and problems.

Decide which best describes your practice's method for data entry:

- For example, if you use priorities for history, but never use problems, then tick the **Priority** box. Now additionally tick the Priority numbered boxes to illustrate which priority numbers you use. For example, if you use 1, 2, 3 and 9, just tick these boxes.
- If you never use priorities but always use problems, tick the **Problem Header** box.
- If you use priorities AND problems, then tick **Priority and Problem Header**. Now additionally tick the Priority numbered boxes that you use in your practice. For example, if you use 1, 2, 3 and 9, just tick these boxes.

**Select All Reports**

Ticking this option places a selection tick in all six reports.

**Clear All Results button**

If you have run the reports already, this button clears old results and overwrites them.

**Run Report**

Runs the reports which have a tick in their adjacent checkbox.