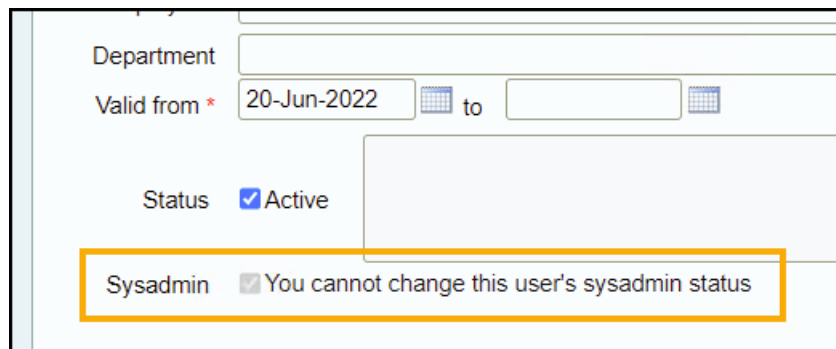


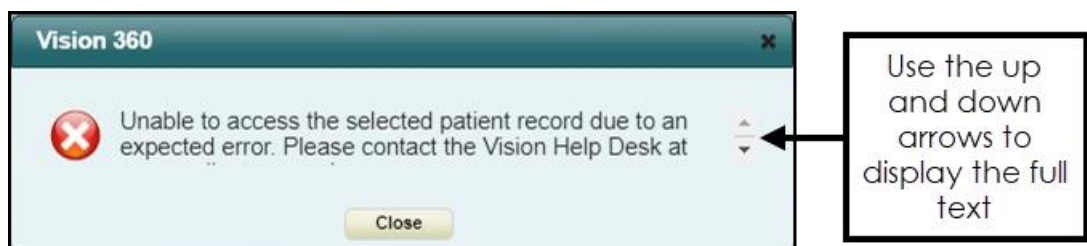
## Tango Release 2.38

**Tango** release **2.38** contains the following new features and improvements:

- **Browser** - You now need **Microsoft Edge** in order to run any **Vision360** applications, this is due to the retirement of **Internet Explorer**.
- **User Details tab** - A new **Sysadmin** option now displays, this is for **Cegedim Healthcare Solutions** use only and so is marked **You cannot change this user's sysadmin status**:



- **Shared Care** - When working in a shared care setting, if **Vision360** identifies a mismatch in either the service identifier, NHS number or date of birth between what is in our database and what was returned from either **EMIS** or **TPP**, the following error displays, 'Unable to access the selected patient record due to an expected error. Please contact the Vision Help Desk at your earliest convenience', select **Close** to close the message:



Plus many background and stabilisation changes.