

---

## GP2GP - Vision PDF printer setup

GP2GP is the electronic transfer of patient records from one practice to another. The GP2GP Docman process exports the whole patient record and automatically generates a clinical summary, so there is no need to run a full patient report as this is now automated. The patient's new practice imports the complete patient record into Mail Manager where it is filed (similar to test results), saving summarising and data entry time. As well as having access to the full patient record the benefits include quickly being able to view allergies, medication history and relevant test results.

### Prerequisites

For GP2GP to work you must be on DLM510 and if you are not accessing Vision via terminal services, each workstation where a GP2GP export runs must have a virtual PDF printer driver setup to create an automated clinical summary. See [Setup Vision PDF printer driver](#) (page 1).



**Important** - For practices using terminal services the PDF driver must be installed and set up on the server, and each user must have access to it. For more information about this, please contact your Health Board.

---

### PDF printer driver

To setup the Vision PDF printer driver:

- 1.** Logon to the workstation as an administrator.



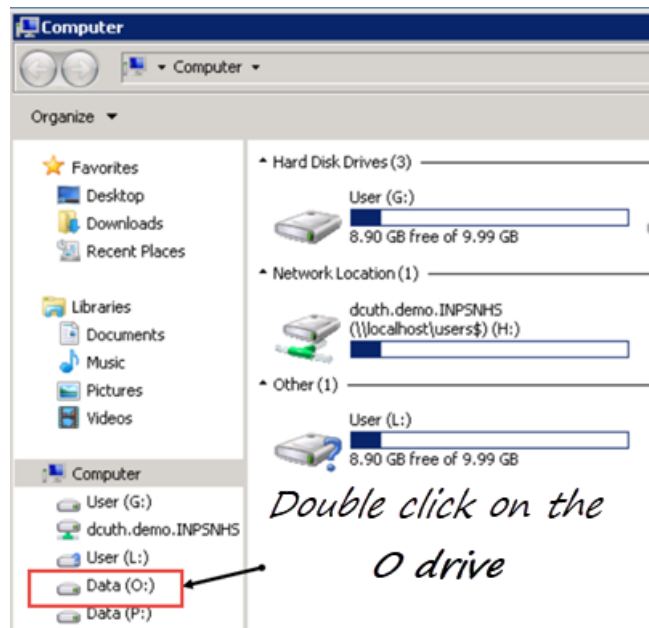
**Note** - If you do not have administrator rights or are not sure of the administrators login and/or password, please contact your Health Board.

---

- 2.** From the desktop, double click on **My Computer**.

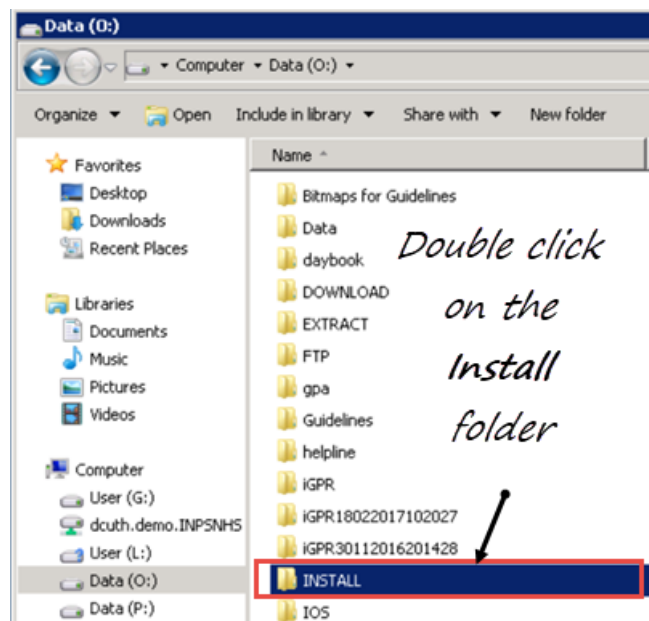


3. Double click on the **O** drive.



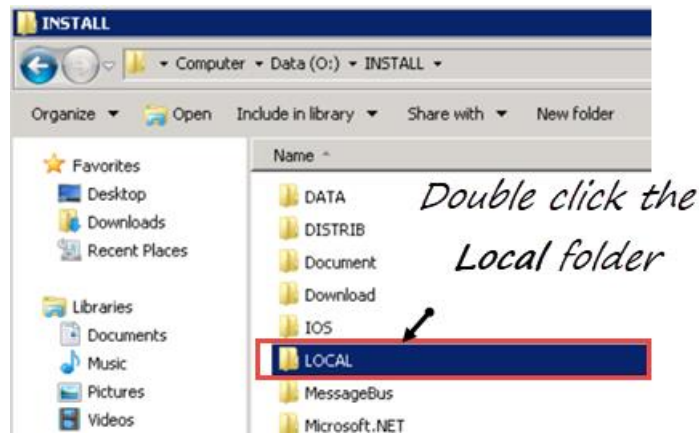
*O drive*

4. Now, double click the **Install** folder.



*Install folder*

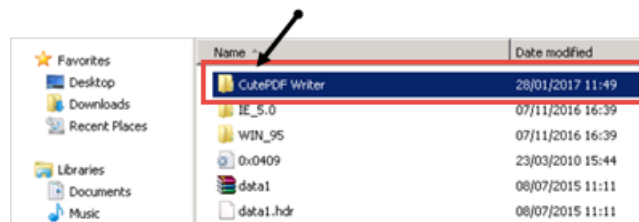
5. Then, double click the **Local** folder.



*Local folder*

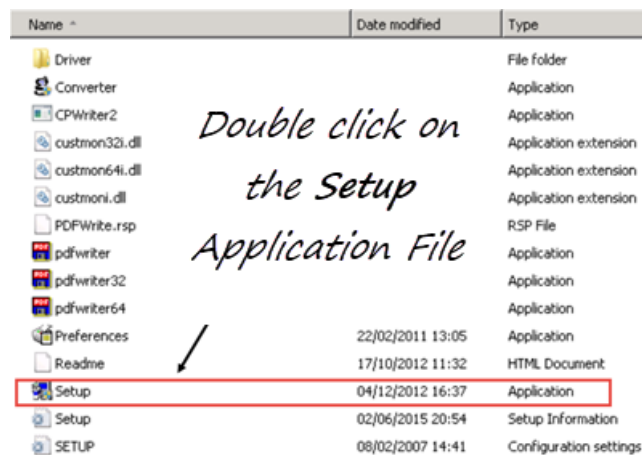
6. Now, double click on **CutePDF Writer** folder.

*Double click on  
CutePDF Writer*



*CutePDF Writer*

7. Finally, double click on the **Setup (application)** file.




*Setup (Application) file*

- 8.** The setup automatically runs and installs a printer driver on the workstation called **Vision PDF**.



*Vision PDF printer driver*

---

 **Reminder** - You need to do this for every workstation where you perform a Docman export.

---