

## SNOMED CT Changes and New Vision Local Codes - Release v38.0

This is the release guide for the **v38.0** SNOMED CT dictionary and Vision Local Code release.

As you may be aware, **Vision 3** dual codes all data, data is entered using Read codes and mapped to SNOMED CT behind the scenes. From the introduction of SNOMED CT there have been additions that cannot be directly mapped to existing Read codes.

---

 **Note** - These can be recorded in **Vision Anywhere**, which is fully SNOMED CT compliant.

---

**Cegedim Healthcare Solutions** create and release **Vision Local Codes**, based on the Read code format, to enable you to both record and report on new clinical terms within **Vision 3**.

---

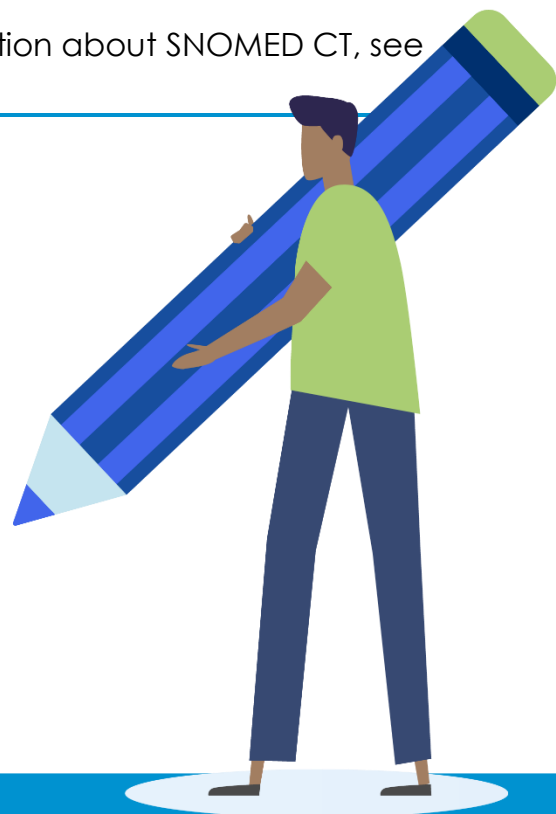
 See [SNOMED CT in Vision FAQs for further information](#).


## SNOMED CT Changes - Release v38.0

For full details of the latest SNOMED CT code release, please refer to <https://digital.nhs.uk/services/terminology-and-classifications/snomed-ct> and select **Use the NHS Digital SNOMED CT Browser**.

---

 **Training Tip** - For further information about SNOMED CT, see <https://www.snomed.org>.



 **Note** - This release contains updates to the **SNOMED CT Code** for a **Vision Local Code** only and does not contain any new codes.

### Vision Local Codes Updated - v38.0

| SNOMED CT Code | Description   | Vision Local Code | Original SNOMED CT Release |
|----------------|---|-------------------|----------------------------|
| 1303503001     | Administration of RSV (respiratory syncytial virus) vaccine | 65Fc.00           | 37.0                       |