

SNOMED CT Changes and New Vision Local Codes - Release v37.0

This is the release guide for the v37.0 SNOMED CT dictionary and Vision Local Code release.

As you may be aware, **Vision 3** dual codes all data, data is entered using Read codes and mapped to SNOMED CT behind the scenes. From the introduction of SNOMED CT there have been additions that cannot be directly mapped to existing Read codes.

 **Note** - These can be recorded in **Vision Anywhere**, which is fully SNOMED CT compliant.

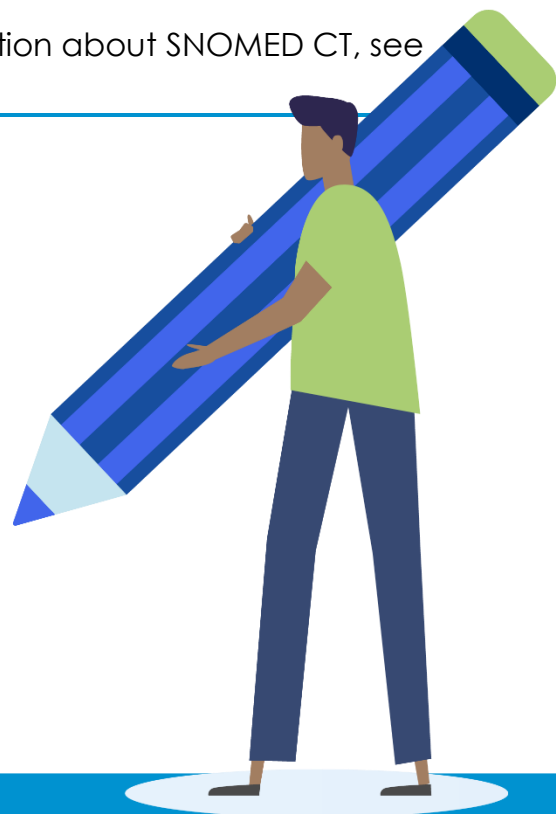
Cegedim Healthcare Solutions create and release **Vision Local Codes**, based on the Read code format, to enable you to both record and report on new clinical terms within **Vision 3**.

 See [SNOMED CT in Vision FAQs for further information](#).

SNOMED CT Changes - Release v37.0

For full details of the latest SNOMED CT code release, please refer to <https://digital.nhs.uk/services/terminology-and-classifications/snomed-ct> and select **Use the NHS Digital SNOMED CT Browser**.

 **Training Tip** - For further information about SNOMED CT, see <https://www.snomed.org>.



New Vision Local Codes Released - v37.0

SNOMED CT Code	Description	Vision Local Code	Keyword(s)
1853491000000104	Administration of RSV (respiratory syncytial virus) vaccine	65Fc.00	RSV
1853501000000105	RSV (respiratory syncytial virus) vaccination declined	8IAU.00	RSV
1853511000000107	RSV (respiratory syncytial virus) vaccination contraindicated	8I23W00	RSV
1107891000000106	Has ReSPECT	8CMq.00	RESPECT
1382601000000107	ReSPECT form	8CMq000	RESPECT
1036651000000102	Musculoskeletal Health Questionnaire total score	38a0.00	MSKHQ
1833081000000108	Therapeutic Index for Local Infections score	38a1.00	TILI