

SNOMED CT Changes, New and Removed Vision Local Codes – Release v36.2

This is the release guide for the v36.2 SNOMED CT dictionary and Vision Local Code release.

As you may be aware, **Vision 3** dual codes all data, data is entered using Read codes and mapped to SNOMED CT behind the scenes. From the introduction of SNOMED CT there have been additions that cannot be directly mapped to existing Read codes.

 **Note** - These can be recorded in **Vision Anywhere**, which is fully SNOMED CT compliant.

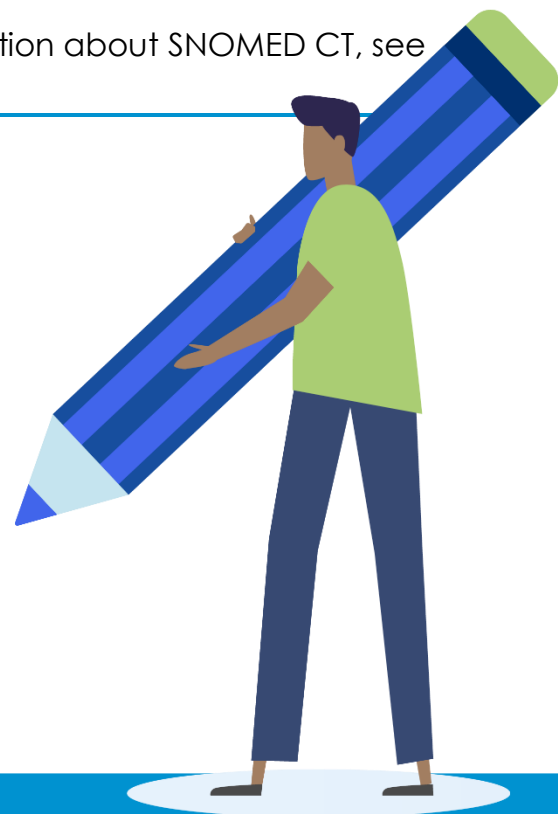
Cegedim Healthcare Solutions create and release **Vision Local Codes**, based on the Read code format, to enable you to both record and report on new clinical terms within **Vision 3**.

 See [SNOMED CT in Vision FAQs for further information](#).

SNOMED CT Changes – Release v36.2

For full details of the latest SNOMED CT code release, please refer to <https://digital.nhs.uk/services/terminology-and-classifications/snomed-ct> and select **Use the NHS Digital SNOMED CT Browser**.

 **Training Tip** - For further information about SNOMED CT, see <https://www.snomed.org>.



New Vision Local Codes Released – v36.2

SNOMED CT Code	Description	Vision Local Code	Keyword(s)
871898007	Administrative live attenuated Human alphaherpesvirus 3 vaccine	65FY300	SHINGLESVAC
698689005	ADHD predominantly inattentive type in remission	E2E0200	ADHDREMISS
698692009	ADHD predominantly hyperactive type in remission	E2E0300	ADHDREMISS
1464561000000107	Provision of CGM (continuous glucose monitoring) system	8O1F.00	CGM
1751131000000107	Valproate therapy stopped	8B3R000	VALPROATE
1326571000000106	Allergy to bempedoic acid	1Z44.00	BEMPEDOIC
1326121000000101	Allergy to ezetimibe	1Z45.00	EZETIMIBE
1362871000000100	Allergy to inclisiran	1Z46.00	INCLISIRAN
1326141000000108	Allergy to proprotein convertase subtilisin/kexin type 9 inhibitor	1Z47.00	PCSK9
1365431000000106	Allergy to alirocumab	1Z48.00	ALIROCUMAB
1365331000000104	Allergy to evolocumab	1Z49.00	EVOLOCUMAB
1365411000000103	Alirocumab contraindicated	8I2C000	ALIROCUMAB
1326611000000102	Bempedoic acid contraindicated	8I2C100	BEMPEDOIC
1326711000000108	Ezetimibe contraindicated	8I2C200	EZETIMIBE

1556841000000104	Icosapent ethyl contraindicated	8I2C300	ICOSAPENT
1362051000000103	Inclisiran contraindicated	8I2C400	INCLISIRAN
1326751000000107	Proprotein convertase subtilisin/kexin type 9 inhibitor contraindicated	8I2C500	PCSK9
1365371000000102	Evolocumab contraindicated	8I2C600	EVOLOCUMAB
1556871000000105	Icosapent ethyl declined	8I3J000	ICOSAPENT
1365381000000100	Evolocumab declined	8I3J100	EVOLOCUMAB
1365421000000109	Alirocumab declined	8I3J200	ALIROCUMAB
1326631000000105	Bempedoic acid refused	8I3J300	BEMPEDOIC
1326721000000102	Ezetimibe refused	8I3J400	EZETIMIBE
1362061000000100	Inclisiran refused	8I3J500	INCLISIRAN
1326761000000105	Proprotein convertase subtilisin/kexin type 9 inhibitor refused	8I3J600	PCSK9
1326601000000104	Bempedoic acid not indicated	8I69000	BEMPEDOIC
1326701000000106	Ezetimibe not indicated	8I69100	EZETIMIBE
1556881000000107	Icosapent ethyl not indicated	8I69200	ICOSAPENT
1362041000000101	Inclisiran not indicated	8I69300	INCLISIRAN
1365401000000100	Alirocumab not indicated	8I69400	ALIROCUMAB
1326741000000109	Proprotein convertase subtilisin/kexin type 9 inhibitor not indicated	8I69500	PCSK9
1365361000000109	Evolocumab not indicated	8I69600	EVOLOCUMAB

1464551000000109	Provision of intermittently scanned minimally-invasive interstitial fluid continuous glucose monitoring system	801E.00	FLASH
1326581000000108	Adverse reaction to bempedoic acid	TJC2600	BEMPEDOIC
1326131000000104	Adverse reaction to ezetimibe	TJC2700	EZETIMIBE
1556861000000103	Adverse reaction to icosapent ethyl	TJC2800	ICOSAPENT
1362881000000103	Adverse reaction to inclisiran	TJC2900	INCLISIRAN
1326151000000106	Adverse reaction to PCSK-9 inhibitor	TJC2A00	PCSK9
1365441000000102	Adverse reaction to alirocumab	TJC2B00	ALIROCUMAB
1365341000000108	Adverse reaction to evolocumab	TJC2C00	EVOLOCUMAB

Removed Vision Local Codes – v36.2

Description	Vision Local Code	Keyword(s)
Renon-Delille Syndrome	C185.00	TEST