

## SNOMED CT Changes and New Vision Local Codes – Release v34.0

This is the release guide for the v34.0 SNOMED CT dictionary and Vision Local Code release.

As you may be aware, **Vision 3** dual codes all data, data is entered using Read codes and mapped to SNOMED CT behind the scenes. From the introduction of SNOMED CT there have been additions that cannot be directly mapped to existing Read codes.

---

 **Note** - These can be recorded in **Vision Anywhere**, which is fully SNOMED CT compliant.

---

**Cegedim Healthcare Solutions** create and release **Vision Local Codes**, based on the Read code format, to enable you to both record and report on new clinical terms within **Vision 3**.

---

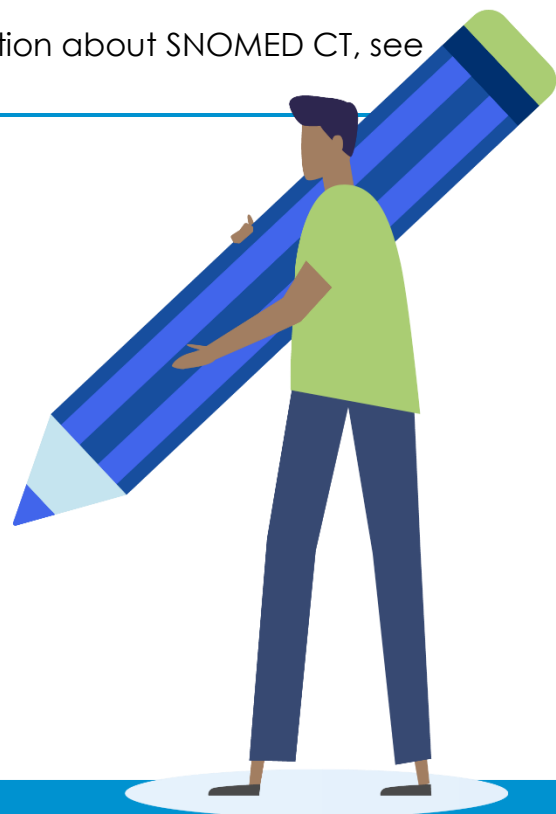
 See [SNOMED CT in Vision FAQs](#) for further information.

## SNOMED CT Changes – Release v34.0

For full details of the latest SNOMED CT code release, please refer to <https://digital.nhs.uk/services/terminology-and-classifications/snomed-ct> and select **Use the NHS Digital SNOMED CT Browser**.

---

 **Training Tip** - For further information about SNOMED CT, see <https://www.snomed.org>.



## New Vision Local Codes Released – v34.0

SNOMED CT Code	Description	Vision Local Code	Keyword(s)
1362101000000103	Assessment of risk of antipsychotic drug therapy	38BB.00	ANTIPSYCH
1198221000000107	Chronic Pain Values Inventory scale	38QU.00	CPVI
1198251000000102	Chronic Pain Values Inventory discrepancy score	38QU300	CPVI
1198241000000100	Chronic Pain Values Inventory importance score	38QU200	CPVI
1198231000000109	Chronic Pain Values Inventory success score	38QU100	CPVI
1361921000000100	Preferred place of death: home of relative	94ZH.00	PLACEDEATH
1320961000000109	Sick, Control, One, Fat, Food questionnaire score	38Do400	SCOFF