

SNOMED CT Changes and New Vision Local Codes – Release v32.12.0

This is the release guide for the v32.12.0 SNOMED CT dictionary and Vision Local Code release.

As you may be aware, **Vision 3** dual codes all data, data is entered using Read codes and mapped to SNOMED CT behind the scenes. From the introduction of SNOMED CT there have been additions that cannot be directly mapped to existing Read codes.

 **Note** - These can be recorded in **Vision Anywhere**, which is fully SNOMED CT compliant.

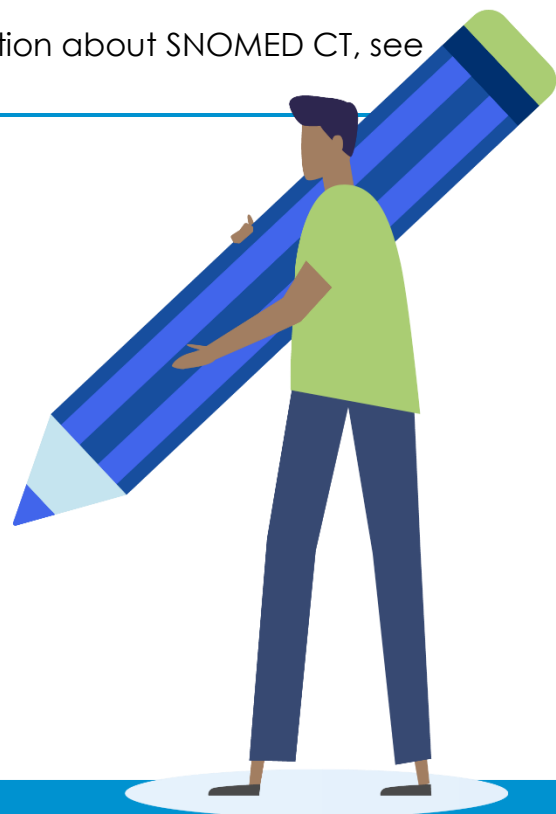
Cegedim Healthcare Solutions create and release **Vision Local Codes**, based on the Read code format, to enable you to both record and report on new clinical terms within **Vision 3**.

 See [SNOMED CT in Vision FAQs for further information](#).

SNOMED CT Changes – Release v32.12.0

For full details of the latest SNOMED CT code release, please refer to <https://digital.nhs.uk/services/terminology-and-classifications/snomed-ct> and select **Use the NHS Digital SNOMED CT Browser**.

 **Training Tip** - For further information about SNOMED CT, see <https://www.snomed.org>.



New Vision Local Codes Released – v32.12.0

SNOMED CT Code	Description	Vision Local Code	Keyword(s)
1078361000000107	Multi-agency risk assessment conference case closed	13Hr.00	MARAC
1362971000000108	History of being at risk of criminal exploitation	14Os100	EXPLOIT
785101000000105	Victim of sexual exploitation	14X6100	EXPLOIT
225823009	Victim of exploitation	14XS.00	EXPLOIT
1188271000000105	Victim of criminal exploitation	14XT.00	EXPLOIT
1188261000000103	At risk of criminal exploitation	14Os.00	EXPLOIT